



ROSEWOOD
INN OF THE ANASAZI®
SANTA FE

Travel Details

Spanish missionaries founded Santa Fe, one of America's oldest and most beautiful cities, in 1609. Spread across a high plateau at the foot of Sangre de Cristo Mountains, New Mexico's capital still glories in the adobe houses and baroque churches of its original architects, while its chic museums and galleries attract art lovers from all over the world. "The City Different" has long nurtured the artisans whose work is proudly displayed in the shops of the historic plaza district.

The Inn is located just steps from the historic Santa Fe plaza, the cultural heart of the city. Over 200 galleries and museums in this small city display an incredible range of arts and artifacts while the natural surroundings offer endless possibilities for leisure and enchantment.

Nearby Airports: Albuquerque International Sunport Airport (60 miles); Santa Fe Municipal Airport (8 miles), private planes and charters, American Eagle.

Transfers: Car rentals, shuttles, private town car service and taxis are available from both Albuquerque International Sunport and Santa Fe Municipal Airport.

Guest Valet Parking: \$20.00 per day.

Attractions

Ancient Anasazi Ruins of Chaco Canyon ❖ Aspen Santa Fe Ballet ❖ Bandelier National Park ❖ Canyon Road Arts & Crafts District ❖ Fly-Fishing (June to September) ❖ Georgia O'Keeffe Museum ❖ Golf at Santa Fe Country Club, Marty Sanchez Links de Santa Fe, and Pueblo de Cochiti ❖ Historic Santa Fe Plaza ❖ Horseback Riding at Broken Saddle ❖ Institute of American Indian Arts Museum ❖ Kasha-Katuwe Tent Rocks National Monument ❖ Loretto Chapel ❖ Mountain Biking ❖ Museum of Fine Arts ❖ Museum of Indian Arts and Culture ❖ Museum of International Folk Art ❖ Museum of Spanish Colonial Art ❖ Palace of the Governors ❖ Route 66 ❖ San Miguel Mission ❖ Santa Fe Cooking School ❖ Santa Fe Farmers Market ❖ Santa Fe Opera (June to August) ❖ Santa Fe Vineyards ❖ Skiing and Snowboarding at Ski Santa Fe, Angel Fire, Pajarito Mountain, Red River, Sandia Peak, Sipapu, Ski Apache, Wolf Creek and Taos Ski Valley ❖ St. Francis Cathedral ❖ Taos ❖ Ten Thousand Waves ❖ Turquoise Trail National Scenic Byway ❖ Wheelwright Museum of the American Indian ❖ White-Water Rafting on the Rio Grande River

Driving Instructions

From Albuquerque International Sunport Airport: Take Sunport Blvd. to I-25 North; follow I-25 North to Santa Fe (approx. 57 miles). Exit Old Pecos Trail North (exit 284). At the top of the off ramp, turn left. At the third stoplight, turn right to stay on Old Pecos Trail. At Paseo de Peralta, turn right. Turn left at the stop sign at Marcy St. and Washington Ave. Rosewood Inn of the Anasazi is the third building on the left.

Services and Amenities

Laundry Valet Service ❖ In-Room Massage & Aromatherapy Treatments ❖ In-Room Dining ❖ Nightly Turndown Service ❖ Twice-Daily Housekeeping ❖ Valet Parking ❖ Business Center ❖ Concierge Service ❖ In-Room Stationary Exercise Equipment Available Upon Request ❖ Wireless Internet Access ❖ In-Room DVD player ❖ Complimentary Daily Newspaper ❖ In-Room Safe Access ❖ Complimentary DVD Library Mini Bar ❖ Keurig Coffee Maker ❖ Lady Primrose Bath Product ❖ iHome/iPad Adapter

Meetings and Events

Located on the first floor, the Anasazi Library, the hotel's intimate meeting and event venue, accommodate 10 to 75 guests. ❖ With 950 square feet of event space, Rosewood Inn of the Anasazi is a unique, year-round destination for elegant and unique gatherings. ❖ Comprehensive meeting services, exceptional cuisine and a knowledgeable staff to ensure every detail exceeds expectations. ❖ High-speed Internet access and full A/V

Meetings & Private Dining Events

Anasazi Library

Located on the ground floor of the Inn, the Library is a resource for guests in exploring the myths, legends and lore of Santa Fe's indigenous cultures, as well as a Boardroom for corporate retreats, meetings and private dining events.

Anasazi Wine Cellar

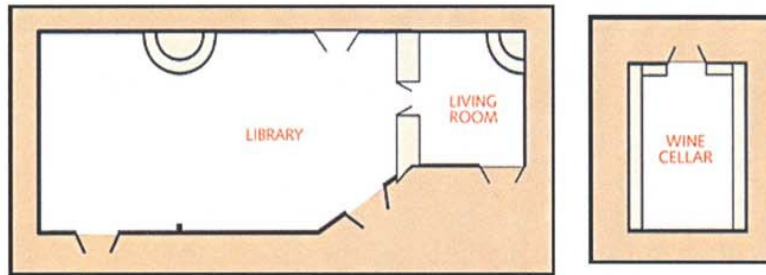
The award-winning Wine Cellar provides an intimate venue for specialized meetings and private dining events.

Anasazi Restaurant

Highly acclaimed, the Anasazi Restaurant offers an atmosphere that is both elegant and rustically Southwestern for breakfast, lunch and dinner. The 92-seat restaurant honors the culinary legacies of the Southwest with changing menus that fuse choice seasonal fare and regional ingredients with a rustic yet sophisticated flavor.

Anasazi Patio

Guests experience the rhythm of life on the historic Santa Fe Plaza while enjoying creative al fresco dining.



	Sq. Ft.	Size	Ceiling	Reception	Dining	Classroom	Conference	U-Shape
The Library	858	22x39	9' 4"	75	54	36	28	26
The Wine Cellar	260	13x20	9' 4"	-	12	-	12	-

Rosewood Inn of The Anasazi Guestrooms



Traditional 300 sq. ft.



Superior 370 sq. ft.



Superior King with Balcony 410 sq. ft.



Deluxe 500 sq. ft.



Anasazi Suite